

FACT SHEET

ecoBETA® EUROPA dual-flush valve with only 1 button



This patented single button dual-flush valve is intended for replacement of dual-flush valves in water tanks of dual-flush toilets:

- For the upgrade of dual-flush toilets with 2 buttons
- Saves from 15 to more than 30% of water used for flushing
- Easy to use
- Easy fitting (see enclosed installation)
- No maintenance
- Adjustable reduced flush levels

Use is simple

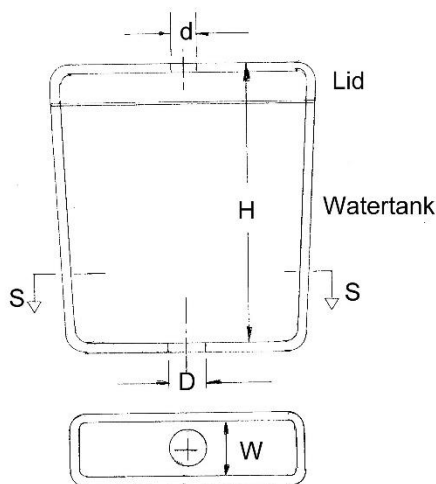
Small flush: Press and let go

Large flush: Press and hold



With ecoBETA® the choice to use water is never made by accident as the user has to hold the button for a few seconds for the large flush.

Technical data



Section S - S

2" drop down valve	Button activated
Cistern outlet hole diameter:	D = 58-64 mm
Lid hole diameter:	d = 38-42 mm
Inner width of water tank at bottom:	W = Min. 88 mm
Height	H = 352-412 mm (without shortening of valve shaft)

FACT SHEET

ecoBETA® EUROPA dual-flush valve with only 1 button

Intended use

The ecoBETA® Europa dual flush valve can be fitted in most toilet makes and models in replacement of dual-flush valves with 2 buttons with a view to conserve water:

- By eliminating the risk of overflushing toilets. The design requires that users must make an extra effort to use water and therefore no longer activate the large flush when only the small flush is required.
- By interrupting the large flush when the flush button is released.
- By minimizing the risk of leakage due to breakage or deposit of scale.
- By allowing easy adjustment of the small flush to the minimum volume required.

Benefits in general

- a. By specifying the ecoBETA® dual-flush, our customers gain considerable water savings.
- b. User-friendly, intuitive/easy to operate: Use of the ecoBETA® dual flush causes no discomfort for the user.
- c. Reliable: Hardly any maintenance or risk of continuously running water
- d. Cost effective: The ecoBETA® dual-flush solution provides high value for money water savings.

Benefits in relation to the user

- e. Simple to use: For the small flush, just press and release. For the large flush, hold the button for 1-2 seconds.
- f. High level of user satisfaction
- g. Minimizes the need for maintenance due to continuously running water

Benefits in relation to water management

- h. Significant water savings
- i. Water companies gain overall cost savings on pumping, transport and purification of wastewater as less water is consumed.
- j. The ecoBETA® dual-flush constitutes a feasible option to tackle the balance between water supply and demand and security of supply in a way that is economically, socially and environmentally sustainable. This water efficiency measure should be combined with other water saving products as well as other measures including behaviour changes and raising awareness.

Technical benefits

- k. The ecoBETA® Europa dual-flush valve is operated by 1 button, upwards or downwards, and designed for replacement of dual-flush valves with 2 buttons in a wide range of toilet makes and models.
- l. The ecoBETA® dual-flush saves water.
- m. The small flush level can be adjusted to the amount of water required by the toilet bowl and the sewage system, from 2½ litres to 5 litres or more. The ecoBETA® dual-flush does not affect the full flush volume.
- n. Easy installation/retrofitting by certified installer
- o. When fitted, the ecoBETA® Europa dual-flush valve is a discreet and integral part of the toilet design.
- p. The ecoBETA® Europa dual-flush valve is made up of only few parts. The sturdy and simple construction and functional design ensures operational reliability and minimizes the risk of malfunction due to breakage or deposits of scale. The only need for maintenance is when the gasket requires replacement every 6-8 years.